

SSAB Weathering
OPTIMIZED
FOR YOU
AND LOW
MAINTENANCE

A close-up photograph of several overlapping metal plates with a weathered, brownish-orange patina. The plates are arranged in a geometric pattern, with sharp edges and deep shadows, creating a sense of depth and texture. The lighting is dramatic, highlighting the metallic sheen and the weathered surface.

SSAB

If you appreciate a wide choice of weather-resistant steel, SSAB Weathering delivers what you are looking for.

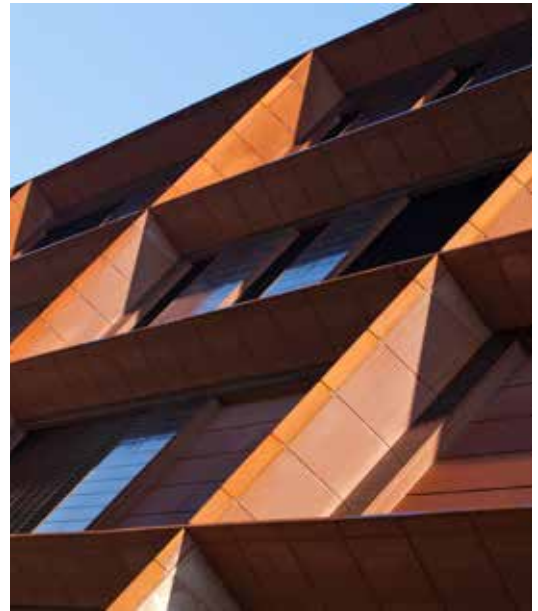


SSAB WEATHERING WILL MINIMIZE TOTAL LIFE CYCLE COST



SSAB Weathering optimized for you

- ▶ Low or zero maintenance requirements
- ▶ No painting needed
- ▶ Self-healing surface, even if painted
- ▶ Widest range on the market
- ▶ SSAB only supplier of COR-TEN® in Europe
- ▶ Yield strength 355-960 MPa
- ▶ High-strength steel for lighter products
- ▶ Possible to order small quantities



SSAB Weathering is our new portfolio of high-strength weather-resistant steels and COR-TEN® grades. These steel grades can make your products stronger and lighter with minimum total life cycle cost thanks to low or zero maintenance requirements.

SSAB Weathering powers your business

SSAB Weathering gives you a market-leading selection of weather-resistant steel. You will certainly be able to find grades and dimensions that suit your production facilities and the desired performance of your end products.

SSAB Weathering has excellent properties for forming, machining and welding. The SSAB Weathering portfolio includes a wide range of grades with

mechanical properties and dimensional tolerances that generally exceed the standards given by EN 10025-5 and ASTM grades.

The combination of weather resistance and workshop performance makes SSAB Weathering steel a cost-efficient choice for a wide range of applications.



Hot rolled plate



Hot rolled strip



Cold rolled strip



Tubes and sections



LONG-TIME PROTECTION AGAINST THE ELEMENTS

SSAB Weathering and COR-TEN® steels are weather resistant because they will protect themselves by surface oxidation. By adding copper, chromium, nickel and phosphor to the steel, the surface of SSAB Weathering gets a protective oxide layer – patina – when it's exposed to alternating wet and dry conditions.



The patina will stop any further rusting of the steel. If the protective layer or a painted surface is damaged, a new patina will form to maintain the protection. This means large lifetime savings for the customer. For steel structures made with conventional steels, the cost of painting and maintenance can be up to 15–20 percent of the total cost.

SSAB Weathering steels are frequently used in industrial heat exchangers and chimneys for their resistance to high temperature and a sulfur-rich atmosphere, conditions that are very damaging to other steels.

Architects and designers choose SSAB Weathering plate for both aesthetic and practical reasons. Used as façade cladding the surface turns into a warm dark-brownish color that needs no paint or other maintenance as long as the building stands.



DIRECT ACCESS TO EXPERTISE AND TECHNICAL SUPPORT

When you purchase SSAB Weathering, you gain access to SSAB's comprehensive support resources. You can always contact SSAB via phone or email to ask about everything from design solutions to material choice, workshop recommendations and technical support.



Our dedicated Tech Support people provide a high local presence worldwide. They are happy to be your partner in long-term development projects, as well as visit your site at short notice to solve urgent problems.

SSAB at your service

You are just a phone call or email away from great service with SSAB. We stand ready to provide optimized products and services that add value to your business. Contact us if you would like to attend a technical seminar, or need a trial delivery to test the performance of SSAB Weathering in your production.



DELIVERED AS YOU LIKE IT

SSAB Weathering and COR-TEN® are delivered in different product types and dimensions up to a yield strength level of 960 MPa. The product portfolio includes hot rolled plate, hot and cold rolled strip, tubes and sections.



You can order SSAB Weathering products from stock or mill, also in smaller quantities for testing. Cold rolled steel in the SSAB Weathering range is delivered as coils, cut to length sheets, or slit coils. SSAB is the only licensed supplier of COR-TEN® in Europe, and we can supply a wide range of COR-TEN® products.

Your local service contact will answer any questions about ordering and shipping, delivery times, marking and packing.

SSAB WEATHERING – GUARANTEED PROPERTIES FOR OPTIMIZED RESULTS

	Yield strength (MPa)		Tensile strength (MPa)		Elongation		Bending radius, 90° bend, T = Transversal			Dimensions				
					A ₉₀ (%) t < 3 mm	A ₅ (%) t ≥ 3 mm	t ≤ 3 mm	3 mm < t ≤ 3 mm	t > 6 mm	Thickness (mm)		Width (mm) Tubes OD/HxB (mm)		
	min	min	max	min	min				min	max	min*	max*		
Hot rolled plate														
COR-TEN A	345	485					16		3xt	6	12	1000	3300	
COR-TEN B	345	485					16		3xt	6	40	1000	3300	
COR-TEN B-D	345	485					16		3xt	6	40	1000	3300	
SSAB Weathering 355	355	470	630				20		3xt	5	60	1000	3300	
Hot rolled strip														
COR-TEN A	345	485		16	20	-	-	-		2.00	12	760	1860	
COR-TEN B	345	485			19	-	-	-		2.00	15	800	1860	
COR-TEN B-D	345	485			19	-	-	-		2.00	15	800	1860	
SSAB Weathering 355	355	< 3 - 510 ≥ 3 - 490	< 3 - 680 ≥ 3 - 630	16	20	1.0 x t	1.0 x t	2.0 x t		1.80	12	760	1860	
SSAB Weathering 550	550	600			18	1.0 x t	1.0 x t	1.5 x t		3.00	12	950	1525	
Cold rolled strip														
COR-TEN A	310-500	450	650	22		0.5xt				0.5	2	125	1527	
SSAB Weathering 700	700	800	N/A	5		2xt				0.98	2.1	125	1502	
Tubes and sections														
SSAB Weathering Tube 355WH	355	470	630		20					2	12.5	26.9 / 25x25	323.9 / 300x300	
SSAB Weathering Tube 500WH	500	580	760		15					2	12.5	26.9 / 25x25	323.9 / 300x300	

* Depending on thickness

OPTIMIZE YOUR BUSINESS

CONTACT SSAB

 +46 243 729 29

 techsupport@ssab.com



SSAB is a Nordic and US-based steel company. SSAB offers value added products and services developed in close cooperation with its customers to create a stronger, lighter and more sustainable world. SSAB has employees in over 50 countries. SSAB has production facilities in Sweden, Finland and the US. SSAB is listed on the Nasdaq OMX Nordic Exchange in Stockholm and has a secondary listing on the Nasdaq OMX in Helsinki.

SSAB

P.O. Box 70
SE-101 21 Stockholm
SWEDEN

Visiting address:
Klarabergsviadukten 70

Telephone: +46 8 45 45 700
Email: contact@ssab.com

www.ssab.com

SSAB